

LEDs "They are all the same"

But are they?
experience the difference below.



powered by:
CREE

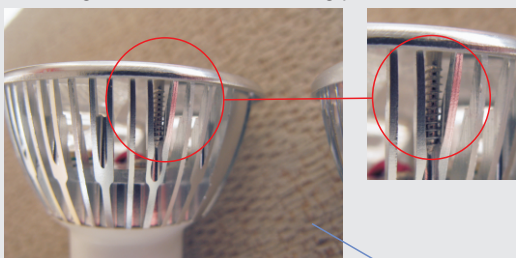
PAR LEDlight Cree P2

Two "similar" LED bulbs

economy BLUELINE® Cree P4 XR-E



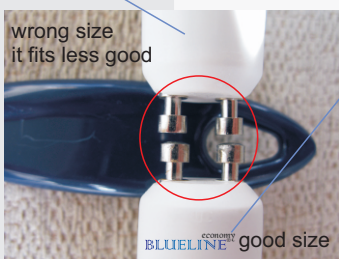
Mounting screw screwed in cooling profile.



Mounting screw screwed in a separated inner frame



GU10 fitting have not the same diameter

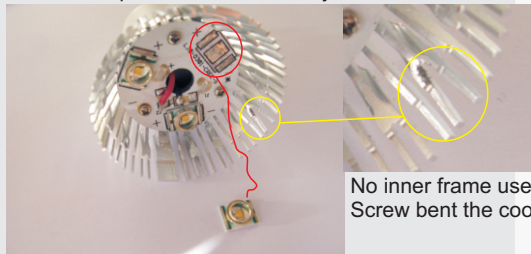


Lenses don't fit on the LEDs
Do i see something missing ?

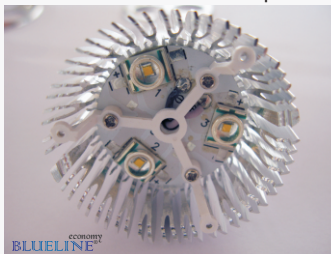


Lenses are nice and tightly connected to the LEDs

After remove the top plate,
the LED chip came off the PCB by itself.

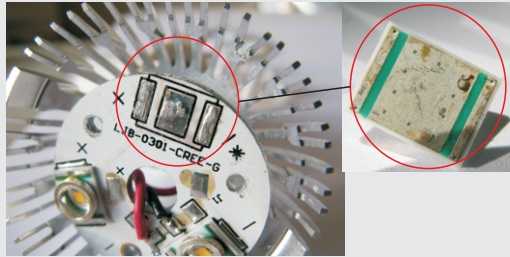


This looks fine,
the inner frame to fix the top cover is visible



No inner frame used.
Screw bent the cooling profile.

LED chip was never fixed.
No trace of molten lead on the chip.



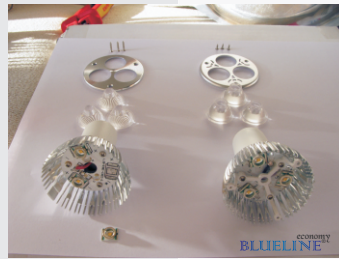
The LED chip doesn't fit in the lens.
this can cause bad light output and color shifting.



economy
BLUELINE®



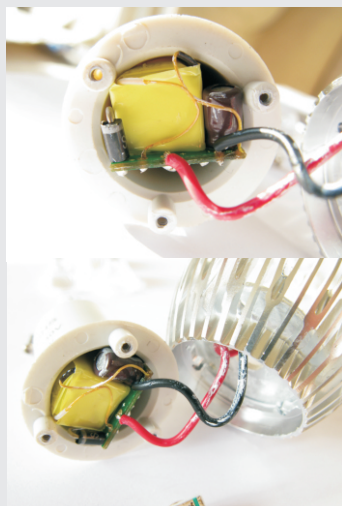
The LED chip fits nicely in the lens.



Removed PCB and power supply



This one is not removable.
Cheap looking pcb and components are stuck in
the GU10 fitting.
wires are covered with white mica paste (cooling paste)



Nice looking power supply.
Looks clean and organised.



From now on, nothing will look similar anymore....

Tested by: Danny B. from Blueline economy

economy
BLUELINE®

we are "open" about our products